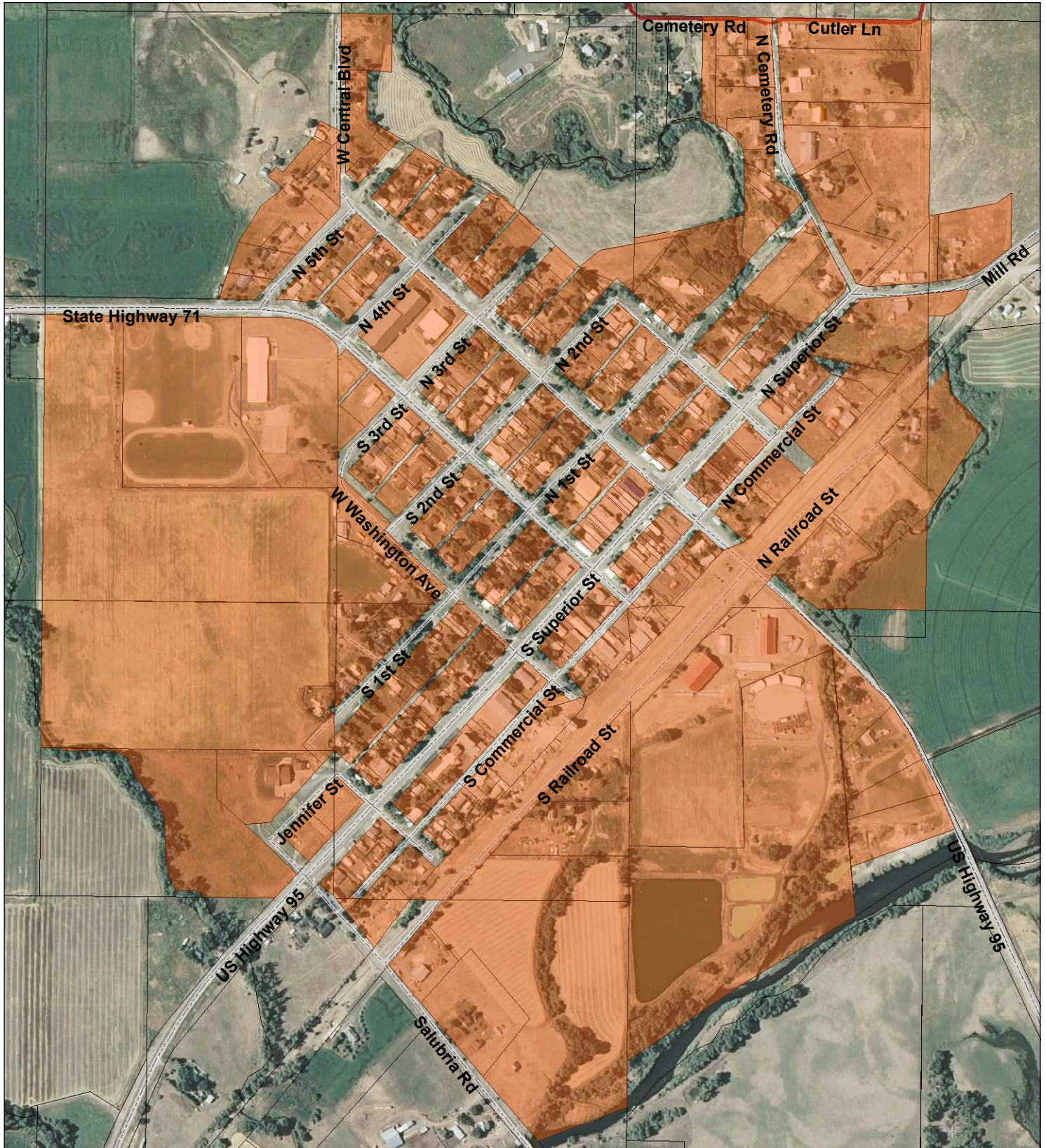




THIS MAP CREATED BY THE OFFICE OF THE
WASHINGTON COUNTY ASSESSOR



1 inch = 604.7 feet



BASED ON GOVERNMENT SURVEYS & OFFICIAL RECORDS
 ON FILE AT THE OFFICE OF THE COUNTY RECORDER OF
 WASHINGTON COUNTY, IDAHO.
 FOR ASSESSMENT PURPOSES ONLY
 DOES NOT GUARANTEE BOUNDARIES

Legend					
	TOWNSHIP LINES		STATE HWY		GRAVEL/DIRT
	SECTION LINES		PAVED		NATIONAL FOREST
	1/4 SECTION LINES		PAVED		PRIVATE
	RIVERS		GRAVEL		